

INSPIRATION



**We invite
mankind
outdoors.**

Lappset is a global trendsetter - let us get you excited about playing and physical activity!

We are one of the world's leading manufacturers of playground and outdoor exercise equipment. There is no secret recipe for our worldwide success, as we apply the same playful philosophy to everything that we do: we are always learning, experimenting and exploring when we design new equipment, and we are not afraid to try new things.

We now have consultants and experts all over the world. Our roots are in Rovaniemi in Finland, and our network of distributors covers more than 60 countries from Europe to the Middle East and Asia and from Australia to America. We are proud to be spreading Finnish happiness and learning across the globe – one playground at a time!

DESIGN WITH AN EXPERIMENTAL AND PLAYFUL TOUCH

We only have one piece of advice to give when it comes to designing playgrounds and sport parks: let your imagination flow! Be wild, go crazy, get inspired and have fun. We do the rest. Our experts are happy to step in and help at any point of the process, so do not be shy to share even your most outrageous wishes and wildest ideas.

Lappset's vision is to get the whole world moving and having fun outdoors together. We want everyone to join in and not leave anyone out. We are extremely proud of designing solutions equipment and playgrounds where anyone can have fun, regardless of physical ability. We have already taken care of safety, accessibility and usability in the design of our products, so all you need to do when putting your playground plan together is have fun.

Come out to play!



CONTENT

Local hangouts	4
Embrace your wild side	18
Fun times for everyone	36
24/7 access to exercise equipment	52
Urban socialising	68
Step into a fantasy world	86
Turning play into business	98

layout

Unfair Lean Marketing Oy

renderings

Lappset Group Ltd.

photographs

Lappset Group & Lappset representatives

print

Painotalo Plus Digital Oy

*Printed on environmentally friendly paper
and in an environmentally friendly printing process.*

© Lappset Group Ltd. 2019

All Rights Reserved

Local hangouts - for fun and active socialising

Every community needs a place where friends and families can get together. Whether you are designing for a school, a nursery, a housing estate or a hotel, you can create an inviting space by being bold and selecting products from different ranges and categories.

There is also no need to worry if you only have limited space available. We are always coming up with ingenious ways to build compact solutions that appeal to people of all ages and fit in with their surroundings. Turn the page for more information.



Ramsi kindergarten
Ramsi, Estonia

- 1 010503 Dino 2 010511 Seahorse 3 137414M Swing frame, customised 4 137031M Activity tower



As Oy Leinelänkaari courtyard
Vantaa, Finland



080901M Panna high



080921M Basket ball stand



Delma Park
Abu Dhabi, United Arab Emirates

1 220505 Pyramid Climber 2 220130 Oxygen



School yard
Seinäjoki, Finland

1 220549 Vault Rails L 2 220501 Precision Ball



1 220511 Gibbonswing M 2 220066M Thallium

School centre Nikkilän Sydän
Sipoo, Finland

Playing supports learning, improves concentration and fosters creativity

Lappset's playgrounds are designed in collaboration with leading Finnish pedagogists and researchers to cater to different ages and stages of child development.

SOCIAL SKILLS - I AM PART OF THE GANG

Social skills are learnt through interaction. Playing with others teaches children to express themselves, control their emotions and build trust. Disappointments are easier to bear and disagreements easier to resolve when everyone follows the same rules.

MOTOR SKILLS - I CAN DO IT

An active lifestyle starts in early childhood. Playing is a way for children to learn how to control their bodies and understand dimensions and their surroundings. Climbing, crouching, balancing and jumping help to build strong muscles and bones.

COGNITIVE SKILLS - I AM LEARNING

Playing feeds children's imagination, gives them motivation and creates an inbuilt desire to achieve. It also improves concentration and teaches patience and the ability to plan and implement courses of action – skills that are also needed at school.

EMOTIONAL SKILLS - I MATTER

Playing strengthens children's self-esteem and gives them ambition by teaching them to seek out the activities that appeal to them and to build friendships. Meaningful activities and relationships help children to realise that they matter and give them the courage to be themselves.



An adventure in your own backyard

The best way to learn about the starry skies and the laws of physics is by playful experimentation. Comfortable seating and conveniently placed park furniture complete the picture.

- 1 231005** Play Planetarium
- 2 NF3210** Chilla Sofa
- 3 200010** Surfy
- 4 137401M** Stork's Nest
- 5 104625M** Long tube tunnel
- 6 200020** Spinning Machine
- 7 CT30M-2503** Litter bin



- 1 200020** Spinning Machine

Motor Museum
Riga, Latvia



Dong Tan
Soul, South-Korea

1 Q11490 Castle 2 137303M Grasshopper

play & imagination

Playgrounds are interactive environments

Children are excitable by nature. They are innately full of enthusiasm and curiosity about their surroundings: the whole world is an adventure. A well-designed playground gives children endless opportunities to use their imagination and also appeals to parents.

1 CHILDREN ARE curious about their environment and want to explore different kinds of objects.



“

**THERE IS NO SHAME
IN GROWN-UPS ALSO
GETTING INVOLVED -
PLAYING IS ACTUALLY
GOOD FOR YOU”**

- Amy Sergison

“Whenever I am designing a new playground, I try to look at things from a child’s perspective. I want to enliven children’s curiosity by introducing fun shapes, patterns and textures. Adults often think that children want something tangible and realistic, but the most important prerequisite for playing is leaving enough room for imagination. You can replace a staircase, for example, with just about anything, and children will find a way to climb it”, says playground equipment designer and Creative Director of Play, Architect Amy Sergison.

Children learn quickly through play, which is important to remember when designing playground equipment. Little details, such as a number on each step or the colours of the rainbow on the walls of equipment, can turn playgrounds into fun learning environments.

“I take inspiration from everything around me – the natural environment, geometric shapes and art – anything that can stimulate children’s imagination. When a child sees a statue in a park, they want to climb on top of it. Children are curious about their environment and want to explore different kinds of objects. I also love watching my own children study the world around them and interact with their surroundings.”

DESIGNS THAT APPEAL TO ALL KINDS OF USERS

As society changes, parents are less and less likely to let their children play unsupervised, which is why playgrounds also need to cater for grown-ups’ needs.

“Playgrounds need to be exciting enough for children but still practical for adults. Parents want to be able to see their children while they play, even when the children themselves think that they are hiding. I always think about the big picture when I design, and the needs of all users. Little details, such as providing shade on sunny days and shelter on rainy ones, can make a big difference from a parent’s perspective.”

In an ideal world, playing is not just a prerogative of children. A well-designed playground gets grown-ups off the bench and taking part in children’s games as well.

“There is no shame in grown-ups also getting involved – playing is actually good for you. In the words of George Bernard Shaw, “we don’t stop playing because we grow old; we grow old because we stop playing”.

THE FUTURE LIES IN LIGHT AND IN PLAYFUL URBAN ENVIRONMENTS

Sergison would like to see playing and playfulness incorporated more into city planning in the future. Doing so would benefit both children and their parents.

“When we think about children playing, we often think about a park. However, there are a lot of children who only ever get to play in an urban environment. It is not purpose-built play areas that we need in the future, but playful cities. Shopping centres, for example, are not just places for shopping, but for spending time in general.”

Another growing trend in the world of play involves utilising the interactive qualities of light.

“Light is a playful and interactive element: children love triggering lights by running past a sensor or pressing buttons. Using light and lighting for a playful effect will be a big thing in the future.”

Embrace your wild side - strength and well-being from the great outdoors

Forests and the outdoors in general are invaluable for our well-being. Numerous studies show that being close to nature and natural environments lowers stress levels and increases both happiness and physical activity. For us at Lappset, fostering a closer relationship between people and nature is an important mission, as understanding biodiversity also helps to preserve it.

The great outdoors is where families make unforgettable memories together. Sharing a moment tracing the rough surface of a tree, revelling in the dampness of moss or marvelling at a beetle at work is a priceless experience. Climbing a rock as if it was a great mountain and building a nest in its crevices breed creativity and inventiveness. An enchanted forest awakens a sense of adventure and playfulness in everyone. The following pages showcase our ideas for having fun with a natural feel.

*Peuranniemi playground
Tyrvävä, Finland*



1 175550 Goblin's climbing



Mustio playground
Raasepori, Finland

1 Q10458-2 Leaf carousel 2 Custom designed 175520 Goblin's forest



1 175582 Flora forest house

Lappset headquarters
Rovaniemi, Finland



Lappset headquarters
Rovaniemi, Finland

1 175582 Flora forest house



Artists Park
Box Hill South, Victoria, Australia

1 175595 Gnome's climbing forest

play & learning

Playing and learning go hand in hand

Playing promotes learning by stimulating the entire body and leaving a memory of the learning experience in the nervous system. The physical activity involved in playing boosts memory and teaches creative thinking.

"Playing is a way for children to process and apply what they have learnt previously. Playing is about using your imagination and learning to understand patterns and causality. Playing is an arena for creative thinking, for stepping outside of routines and coming up with new solutions", says learning researcher and Adjunct Professor Pirkko Siklander from the University of Oulu.

One good example of creative thinking is children's ability to make their surroundings suit whatever game they want to play. Playing also teaches children the laws of physics and basic life skills.

PLAYING IS A WAY TO LEARN ABOUT SOCIETY

"Playing helps children to develop emotionally by teaching them, for example, to identify different emotions and control them. Strategic thinking and problem-solving skills also benefit from having to think up ways to move the game forward by reflecting on each situation and deciding whether more toys, for example, are needed", Siklander explains.

Studies show that role-playing is extremely important for learning. Playing gives children an opportunity to put themselves in different positions and take turns seeing things from the perspectives of both leaders and followers.

"Even the planning of the scenario and roles is a learning experience, as it requires children to use their previous experience, understanding and knowledge of the subject. Playing itself is an opportunity to accumulate new knowledge through others", Siklander says.

“

**CHILDREN
SHOULD IDEALLY
BE CONSULTED
ON PLAYGROUND
DESIGNS. ”**

- Pirkko Siklander



PLAYING IS AN ACTIVE FORM OF LEARNING

The physical aspects of playing challenge both body and mind and give children feedback on their own endurance and ability. Playing gives children an opportunity to learn new things.

"Children see playing as an active form of entertainment. Watching television, for example, is not the same as playing. Playing gives children stimuli that excite them and keep them motivated."

Brain research shows that human beings function holistically and that physical activity also stimulates the mind. The importance of movement therefore cannot be emphasised enough and should be incorporated into the learning process.

"We all know how a little bit of exercise can suddenly help you to come up with a solution to a problem that has been on your mind for a long time. It takes time for the brain to process new information, which is why it is important to keep your whole body active either during or soon after a learning scenario", Siklander says.

A DREAM PLAYGROUND IS ONE THAT HAS SOMETHING FOR EVERYONE

In the world of playgrounds, versatility is king. An optimal playground design provides stimuli for different activities, different kinds of users and different ways of thinking. Technology enables building a new generation of playgrounds with completely new dimensions. Digital components can be designed to give children feedback on their progress or tips for taking their game to the next level. Siklander believes that a great playground design also requires input from the true experts: children.

"Children should ideally be consulted on playground designs. Giving children a say makes them more likely to ultimately use the playground, and the design process itself can also be a learning experience and an opportunity for children to use their imagination."

PIRKKO SIKLANDER is a learning researcher and Adjunct Professor in the University of Oulu.



Lappset headquarters
Rovaniemi, Finland

1 175529 Magic mountain



Footscray Park
Footscray, Victoria, Australia

1 Custom designed Q08226 Flora play tower

Responsible and environmentally friendly playgrounds

environment & responsibility

We care about children's well-being. We want to bring joy to children and give them unforgettable experiences, but we also want to contribute to building a better future for them. That is why responsibility and environmental friendliness are so important to us. Our roots in the wild north also inspire us to look after our environment.

We adhere to a strict corporate social responsibility policy in everything that we do. Our policy covers corporate governance, human rights, occupational safety and health, environmental friendliness, equal opportunities, consumer protection and local activism. We also adopted an environmental policy in 1988, which is designed to help us to minimise the harmful environmental impacts of our production processes, products and services. External auditors evaluate the success of our environmental policy at regular intervals.

WE TRUST IN FINNISH WOOD

All our products are designed to be ecological, and we are always looking for ways to lower our environmental impact. The long lives of our products make them ecologically sustainable, and their modular structure allows us to use less wood and to save in warehousing and transport costs.

Our products are mostly made of Finnish wood, which is a renewable natural resource. Wood is a sustainable, recyclable and carbon-neutral material, which consumes the same amount of carbon dioxide while it grows as is released by its disposal. The total volume of emissions from our wooden playground products is extremely low compared to products made from other materials.

You can read more about our corporate social responsibility policy at www.lappset.com.



Peuranniemi playground
Tyrnävä, Finland

1 175510 Troll's shelter 2 175575 Forest elf's swing



Artists Park
Box Hill South, Victoria, Australia

1 175555 Troll's trees



© LAPPSET GROUP LTD. / ALL RIGHTS RESERVED

A challenge course in the woods

With our fun and imaginative products, a clever designer can build an action-packed obstacle course that challenges users of all ages. The right equipment provides opportunities for climbing and balancing and a chance to push your limits while enjoying yourself.

- 1 175529 Magic mountain 2 NF7104 Ströget sofa 3 175593 Fish Trap 4 120239 Group Swing
5 NF1910 Vanda planter 6 175571 Flora Grasshopper 7 010512 Moose

Fun times for everyone – laughter keeps you young

Our colourful and inviting products bring a smile to anyone's face – regardless of age. We can help you to come up with a design that gets everyone moving.

The colours, shapes and versatility of a well-designed playground brighten up any environment and provide enough challenges for all kinds of users to enjoy. Let yourself go and see how you can have fun with your designs on the following pages!



Public park
Yilong New District, Guizhou Province, China

1 Q11256 Bridge



Central park
Kouvola, Finland

1 Custom designed 137124M Activity tower



1 137602 Play centre M

Residential area park
Lerum, Sweden



Public park
Madrid, Spain

1 LAPPSET PREMIUM Tree house

inclusive design

Bringing joy to everyone

We believe that everyone has the right to play and to be active. Our inclusive design approach enables us to build playgrounds and sport parks where everyone can take part, get a sense of achievement and have fun regardless of ability. Our range of inclusive products ensures that users with disabilities or reduced mobility can also get involved and that nobody is left out.

While our inclusive design equipment promotes equal opportunities, accessibility must always be approached holistically. Making playgrounds and parks accessible and enjoyable for all is easy when you just remember a few basic rules:

- Well-lit, safe and properly paved footpaths immediately make a park more accessible.
- A bright colour scheme with enough contrasts makes products easier to see.
- Vertical and horizontal bars make products easier to grip and help users to keep their balance.
- Leaving enough space around slides and other products makes it easier for carers to provide assistance and keep any mobility aids ready nearby.
- Accessibility also means providing seating at different heights with backrests and armrests for support.
- Proper signage containing enough information makes everyone's life easier.



Residential area park
Lerum, Sweden

1 137602 Play centre M

You can read more about our inclusive design concept at www.lappset.com or ask us to help you with inclusive playground design.



Keskuskenttä sports arena
Rovaniemi, Finland

1 081510M Senior park M

2 NF4002 Nifo sofa

3 081325M Fitness Park M

4 137300M Motoric Track

play & aging

Exercise promotes longer lives and independence

There is still a shortage of outdoor exercise areas for older people. User-friendliness and comfort are key when designing for older users.



i PAZIT LEVINGER thinks the needs of older people are often forgotten when new exercise facilities are being designed.

“

GOOD MOTOR SKILLS HELP OLDER PEOPLE TO GET THROUGH DAILY CHORES AND LIVE INDEPENDENTLY.”

- Pazit Levinger

“There is a serious lack of exercise facilities for older people. We have to start giving more attention to the needs of the elderly and give them opportunities to stay physically active”, says Senior Researcher, Associate Professor **Pazit Levinger** from the National Ageing Research Institute in Australia.

Levinger studies the role of exercise in promoting the physical and mental well-being of older people. She considers it worrying how often the needs of older people are forgotten when new exercise facilities are being designed. Playgrounds and facilities for young adults are common, but the options for older people are still far too limited. However, exercise benefits people of all ages.

EXERCISE BRINGS PHYSICAL AND MENTAL WELL-BEING

“Good motor skills help older people to get through daily chores and live independently. Exercise naturally builds muscle and increases mobility, but it is also good for the mind. Exercise is also directly linked to longer lives and a lower risk of chronic illness”, Levinger explains.

Older people should focus on exercises that mimic the movements that they need every day, such as standing up, reaching up into cupboards or climbing stairs. Strong leg muscles and balance are especially important.

THE APPEAL OF ATTRACTIVE SURROUNDINGS

Outdoor exercise areas are a great way to give older people easy access to user-friendly exercise equipment. In addition to the equipment itself, however, special attention must be given to the accessibility of the area and places where visitors can rest. Well-designed outdoor exercise areas also help to promote social interaction, as they provide older people with an opportunity to get together.

“Outdoor exercise areas for older people must be comfortable and appealing. They must be easy to access both on foot or by car. The equipment must be safe and easy to use, and every product must come with clear instructions. Well-maintained and safe footpaths, comfortable seating and shady spots in hot weather are also important”, Levinger says.



Visio De Vlasborch
Vught, Holland

1 Q10523 Training table



Residential area park
Lerum, Sweden

1 CUSTOM DESIGNED Inclusive sandbox



© LAPPSET GROUP LTD. / ALL RIGHTS RESERVED

Put your body to the test

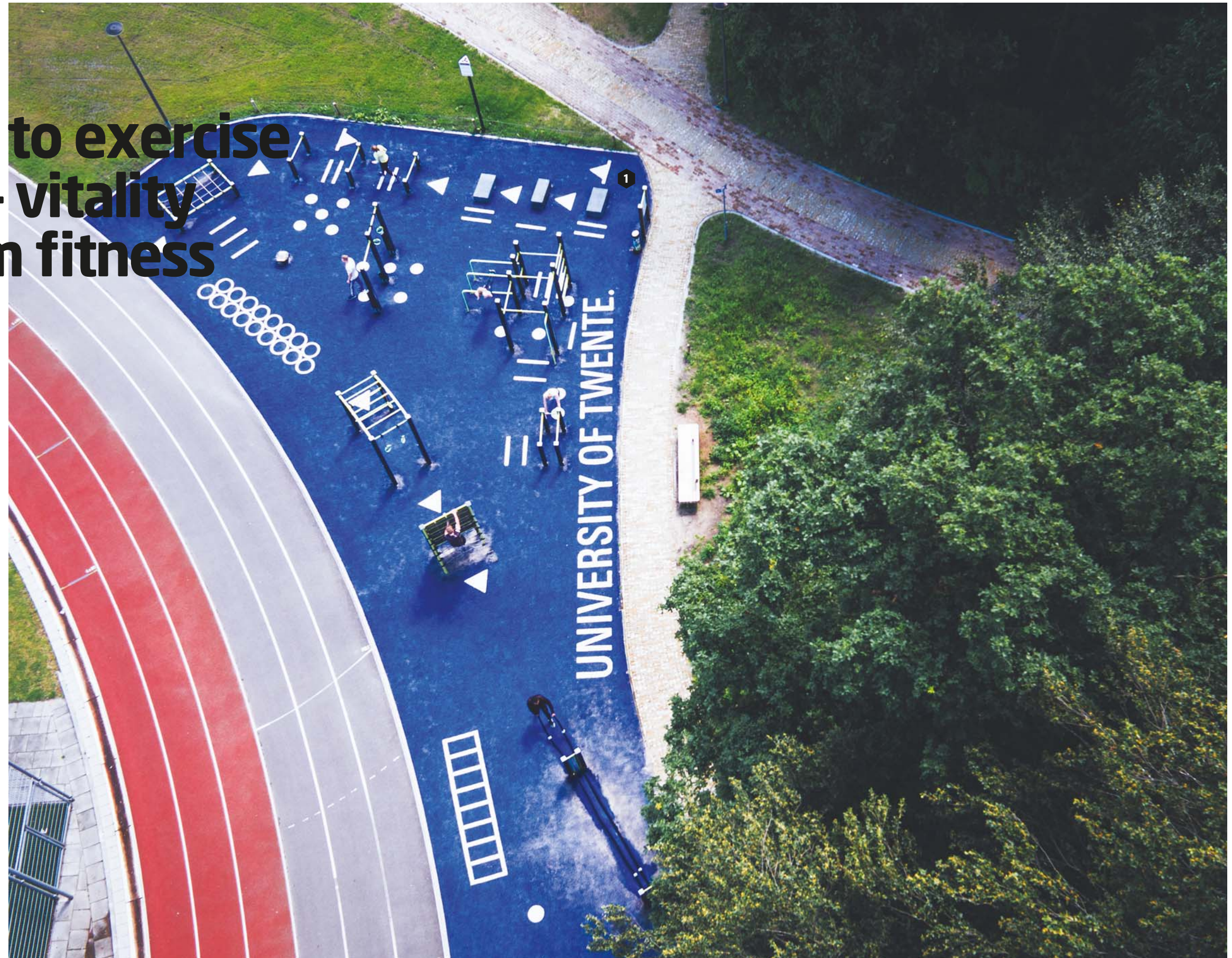
An outdoor exercise area with enough versatility gets every generation moving. Our safe and user-friendly products are great for improving motor skills and mobility and suitable for people of all ages.

- 1 010710** Fox
- 2 NF2310M** Scandinavia sofa
- 3 137602** Play centre M
- 4 081270M** Dip'n Fly
- 5 137417M** Bird's nest swing
- 6 CL100-7024** Kita 100 litter bin
- 7 081008M** Core Twister

24/7 access to exercise equipment - vitality and fun from fitness

Exercising is both fun and vital for our health. Easy access to exercise equipment motivates people to get fit and stay fit. Exercise not only improves our fitness levels but also our moods. With a 24/7/365 weight-training spot in a park around the corner, not having a gym membership is no excuse.

Outdoor gym stations are an ecological alternative for gym-based toning exercises and easy to incorporate into, for example, a walk around the neighbourhood. Easy access to the equipment lowers the threshold for trying strength training for the first time and appeals equally to children, grown-ups and older people. The outdoor setting is also good for the mind, as fresh air both lowers stress levels and gives more energy for the workout.



University of Twente
Twente, Holland

1 CUSTOM Fitness Park M



Pop up -street workout, Kaisaniemi Park
Helsinki, Finland

1 081655M Street Workout M

play & exercise

Parkour is an individual sport with a sense of community

Parkour is about using your body and about using your environment. It is about running, jumping and climbing. Parkour is a full-body workout that also keeps the mind active and creates a feeling of togetherness.

i **PARKOUR IS** still an experimental discipline, but Pihlaja is now a professional who trains others and performs in parkour events around the world.

"The Finnish Ministry of Education and Culture asked 120,000 children and adolescents to name their favourite hobby*, and they chose parkour, which is why we urgently need more purpose-built parkour environments", says **Perttu "The Spider" Pihlaja**, Head of Development at the Finnish Parkour Academy.

Pihlaja makes a valid point: parkour is great for children's physical, psychological and social development. Compared to many other sports, parkour is a very inexpensive hobby that requires no previous experience or special equipment. Parkour is also a very safe hobby – safer than football, for example.**

"The aim is to get from one point to another in a complex environment in the fastest and most efficient way possible. It is a great way to boost your agility, strength and endurance but also creative thinking", Pihlaja explains.

A DISCIPLINE FOR ANYONE AND EVERYONE

Parkour is a highly inclusive discipline, since everyone can choose their movements according to their own ability. Although parkour is an individual sport, training together makes it a great group activity. There is no right way to get through a course, and there are always new solutions and ways forward. Practitioners can therefore learn from each other regardless of skill level or age. Parents and children can also train together.

"Parkour is about having fun and experimenting together. Age is irrelevant. I often have my own children with me when I train", Pihlaja says.

Parkour is often mistakenly thought of as a young man's discipline or an extreme sport. Pihlaja wants to dispel the misconception.

"People mostly get their ideas from videos posted on social media that show professionals performing dangerous-looking stunts that take years of training. Contrary to what the videos suggest, parkour is not about taking risks but practising and learning stunts safely, one movement at a time. This aspect of the sport does not come across from the videos."

There are all kinds of practitioners, but what they all have in common is the desire to try new things. Parkour does not need to be dangerous, and skills and courage grow with training. Seeing the streets differently from an average pedestrian is a skill in itself and that, too, takes practice.

“

WHAT MAKES PARKOUR SO MUCH FUN IS THE FREEDOM TO PRACTISE WHEREVER AND WHENEVER. THERE IS NO CORRECT WAY TO DEAL WITH AN OBSTACLE.

- Perttu Pihlaja

"The disbelieving looks that parkour practitioners used to get in the early days in particular were enough to make you question whether we should even be doing this in public. But you soon get over it", Pihlaja says.

PARKOUR ENVIRONMENTS BRING PEOPLE TOGETHER

A well-designed and visually inspiring environment challenges seasoned practitioners to try new stunts and encourages new people to get involved. Purpose-built parkour environments are places where practitioners can get together to train without worrying about the social acceptability of the sport, which also lowers the threshold for others to join in.

"Purpose-built parkour environments combine all the different elements of the discipline. In a regular cityscape, an ideal wall-run spot can be miles away from the perfect place for cat leaps, for example, which makes training more difficult", Pihlaja explains.

Every product in Lappset's parkour range comes with instructions and examples of the movements that can be performed. The products have been designed in consultation with parkour professionals, including Pihlaja.

"Well-designed products make it possible for practitioners of different abilities to train in versatile ways. Equipment for practising wall-runs, for example, needs to feature walls of different heights and at different angles. In addition to versatility, the equipment must be positioned just right to enable the most important aspect of the sport: combining movements. Practitioners need correctly positioned products to be able to build a route that mixes different movements."

According to Pihlaja, getting parkour professionals involved in the design process is crucial.

"Only seasoned practitioners know the different ways in which movements can be combined, the limits of parkourists of different abilities and the kinds of equipment that appeal to them."

* National School Survey 2017: parkour was voted the most appealing hobby in the Arts and Culture category.

** Acute and Stress Injuries in Parkour, Department of Health Sciences, University of Jyväskylä, 2012



University of Twente
Twente, Holland

1 081285M Cargo Net Wall



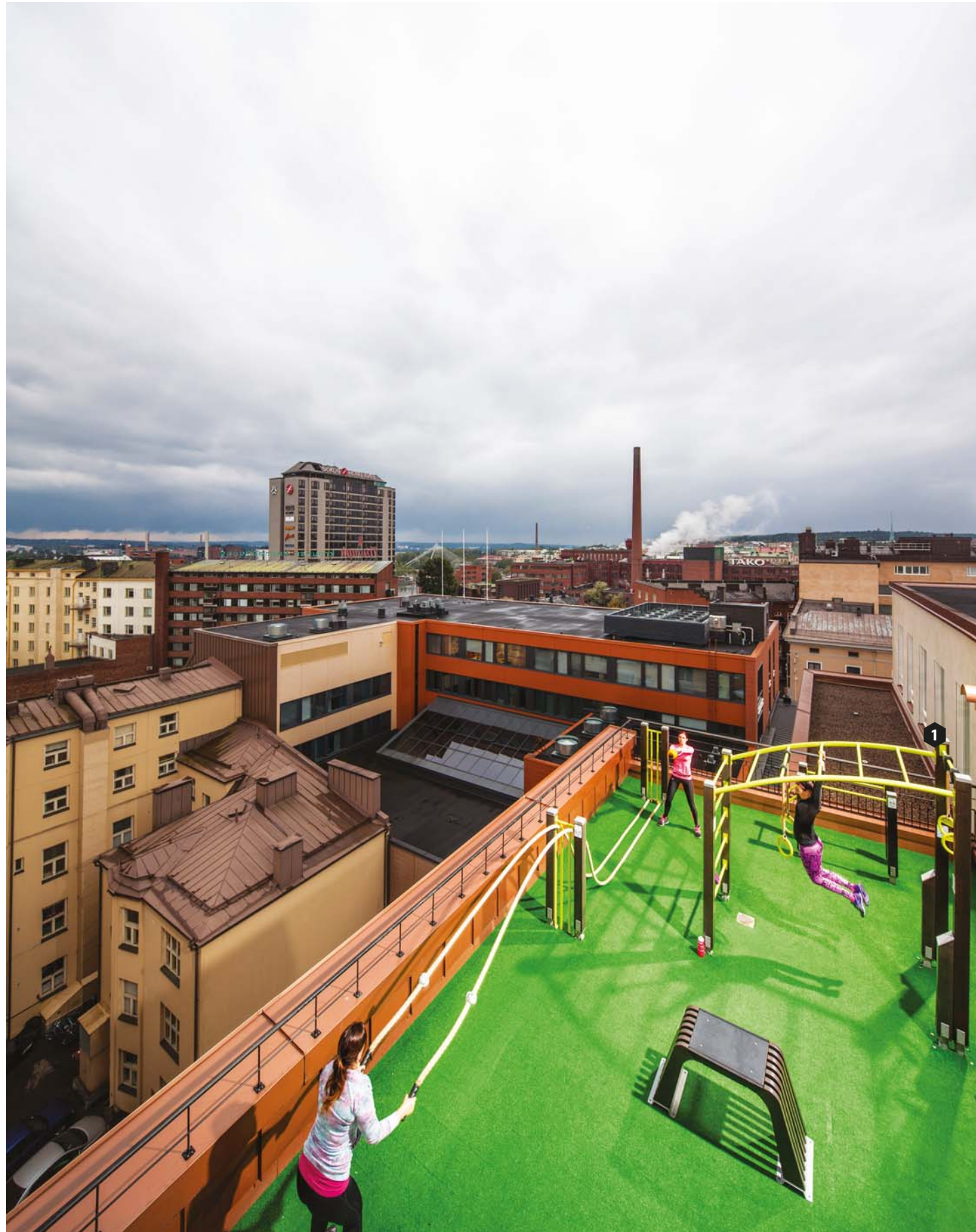
1 220513 Gibbon Swing **2 220531** Tic-Tac Cube M

Public park
Yilong New District, Guizhou Province, China



Lappset headquarters
Rovaniemi, Finland

1 081721M Vault M 2 081732M Base L



GoGo Gym
Tampere, Finland

1 CUSTOM DESIGNED Fitness Park S



Build up a sweat and get your heart rate going

Our parkour range challenges even hard-core fitness fanatics. Many of the products are designed to work with your own body weight and tone every muscle.

- 1** 220615 Wall Bouldering Cube L **2** 081201M Box M **3** 080490M Classic 90 **4** 220505 Pyramid Climber
5 220130 Oxygen **6** 081001M Cross Trainer **7** 081206M Barbell M



Reem Central Park
Abu Dhabi, United Arab Emirates

1 CUSTOM DESIGNED Fitness Park M



i REGULAR maintenance keeps playgrounds safe and attractive.

service & maintenance

Looking after your playground or sport park with upgrades and repairs

Playgrounds require regular maintenance to keep them safe and attractive, and even an old playground can be given new life with a few new products. It is not always necessary to start again from scratch; small improvements can make a big difference. Upgrading an old playground is also the ecological thing to do, as a few tweaks can make old products appeal to children for many more years to come.

Repairs in old playgrounds should always be planned in consultation with professionals. A playground's ability to provide stimulating and safe experiences for users can be restored by simply painting tired-looking products and replacing or repairing any broken parts. The condition of safety surfaces and the need to upgrade them should also be given special attention.

A few new products and adventurous ideas can totally transform an old playground. Adding a couple of pieces of exercise equipment instantly increases the appeal of a playground, as it can then be used by people of all ages. A single futuristic product can give an old playground a contemporary look and also reinvigorate interest in the existing equipment.

You can read more about playground maintenance and browse new products at www.lappset.com.

Urban socialising - in the coolest spot in the city

A well-designed sports or play area brings people together. Use your imagination to create a modern space fit for energetic games and dynamic workouts. Unique and striking designs also attract visitors from further afield and add colour to urban environments.

Pick and choose from our different ranges to come up with a solution that fits in with its surroundings and caters to all kinds of fitness and fun. The next few pages are full of inspiration for modern, dynamic designs.

*Speelhof playground
Sint Truiden, Belgium*



1 239031M Halo Cubic



Parkour park, Khodinskie Park
Moscow, Russia

1 220549 Vault Rails L

2 220543 Precision Curve

3 220526 Spider Cage L



Public park
Santiago de Compostela, Spain

1 LAPPSET PREMIUM Sea monster



1 239031M Halo Cubic

Speelhof playground
Sint Truiden, Belgium



Lina Sandell park
Uppsala, Sweden

1 CUSTOM DESIGNED Wall-Holla

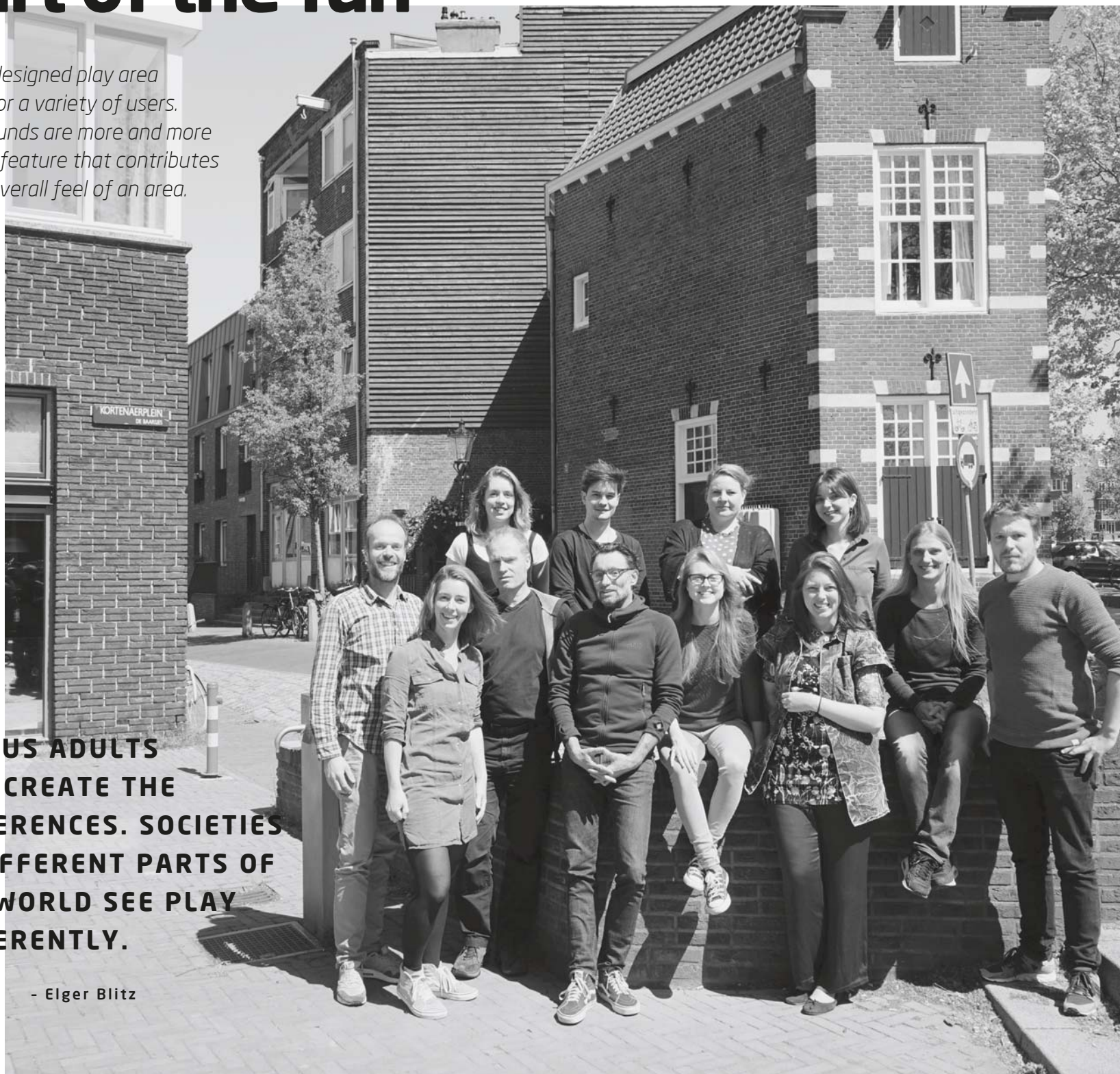
play & design

Taking risks is part of the fun

A well-designed play area works for a variety of users. Playgrounds are more and more often a feature that contributes to the overall feel of an area.

“IT IS US ADULTS WHO CREATE THE DIFFERENCES. SOCIETIES IN DIFFERENT PARTS OF THE WORLD SEE PLAY DIFFERENTLY.

- Elger Blitz



“Playing is human nature. Wherever we are, we are always playing. Even as adults we take on roles and put on performances”, says urban playground designer Elger Blitz.

Blitz is the founder of the Dutch landscape design company, Carve, which specialises in playgrounds. He is also the brains behind Lappset’s urban playground concept, Wall-Holla, which was born out of the need to get creative in a school playground.

“We had a very small space to work with and needed a solution that would allow a large number of children to play at the same time. The client wanted equipment for climbing, an area for running around as well as a football pitch. Wall-Holla was the answer that we came up with”, Blitz explains.

PLAYING IS ALL ABOUT EXPERIMENTATION

According to Blitz, the elements of play are the same everywhere, but they manifest themselves in different ways.

“It is us adults who create the differences. Societies in different parts of the world see play differently. In Asia, for example, parents tend to be a lot more protective of their children than European parents.”

Playgrounds are the solution in an urban environment. They provide a safe place for a large number of children to play and interact with each other. Safety is naturally important, but so is understanding the need to take risks. Playing is all about experimenting and learning by taking risks.

“Children learn by taking risks. They want to test their limits and feel that they have accomplished something. Playgrounds and playing must not be boring”, Blitz says.

CATERING TO ALL KINDS OF USERS

Blitz always starts his designs from a clean slate. For him, it is important not to make assumptions about what the client wants, but to base every decision on the client’s actual needs, wishes and sources of inspiration.

“My background is in architecture, and I therefore get my ideas from my surroundings. I can find inspiration, for example, in the silhouette of a tree, a story that I am reading or the headlights of a car in a snowstorm. I collect pieces of information from around me and try to see things from a new perspective. Creativity is putting familiar things together in a new way”, Blitz explains.

It is also important for Blitz to design with all users in mind, which is why he designs not just for children but also their parents. He is looking forward to a future where playgrounds blend in seamlessly with the surrounding cityscape.

“Playgrounds are an element of a greater whole. We want to design environments that everyone enjoys. Our designs must also appeal to adults, both aesthetically and from a functional point of view”, Blitz says.

i ELGER BLITZ is looking forward to a future where playgrounds blend in seamlessly with the surrounding cityscape.



Urban socialising

Lappset's edgier playground products make for an eye-catching form of street art in an urban environment. These products are never boring, and children always find new ways to use them and get ideas for exciting games.

- 1 081623 Pumptrack M 2 081732M Base L 3 239031M Halo Cubic
4 081726M Vault LU 5 400114IS Wall-Holla 14



- 1 137302M Motoric track

Public park
Yilong New District, Guizhou Province, China



Docklands Fitness Station
Docklands, Victoria, Australia

1 CUSTOM Pop-up fitness park



CUSTOM Pop-up Monkey bars
Kaisaniemi, Helsinki, Finland

Photo: Tough Viking

Public park
Madrid, Spain

lappset premium

Playful architecture

Lappset Premium is the way to go when our ready-made solutions do not fit your plans. Our design team is at hand to help you to create a striking landmark or a custom playground that both adds character to the neighbourhood and provides a place for socialising. Lappset Premium combines art, architecture and playfulness in a revolutionary way by creating one-of-a-kind purpose-built play areas that blend in perfectly with their surroundings.

Our design team consists of leading landscape architects and playground equipment designers who know how to create practical yet incessantly fascinating play areas that are worth visiting from further afield as well.

Examples of what is possible
with Lappset Premium can be
found at www.lappset.com



Step into a fantasy world - lose yourself in a fairy tale

Once upon a time there was a playground full of traditional themes and fairy tale characters that even the grown-ups knew well enough to get involved in children's games. A medieval castle, an exotic zoo or an underwater world appeals to people of all ages. With our colourful range of fantastical products, you can bring your favourite fairy tale to life.

Design a space where children can explore high speeds, excitement and familiar stories in a safe and fun setting - happily ever after.

Kids Wonderland
Molenschot, Holland



1 137840 Santa Maria



Kids Wonderland
Molenschot, Holland

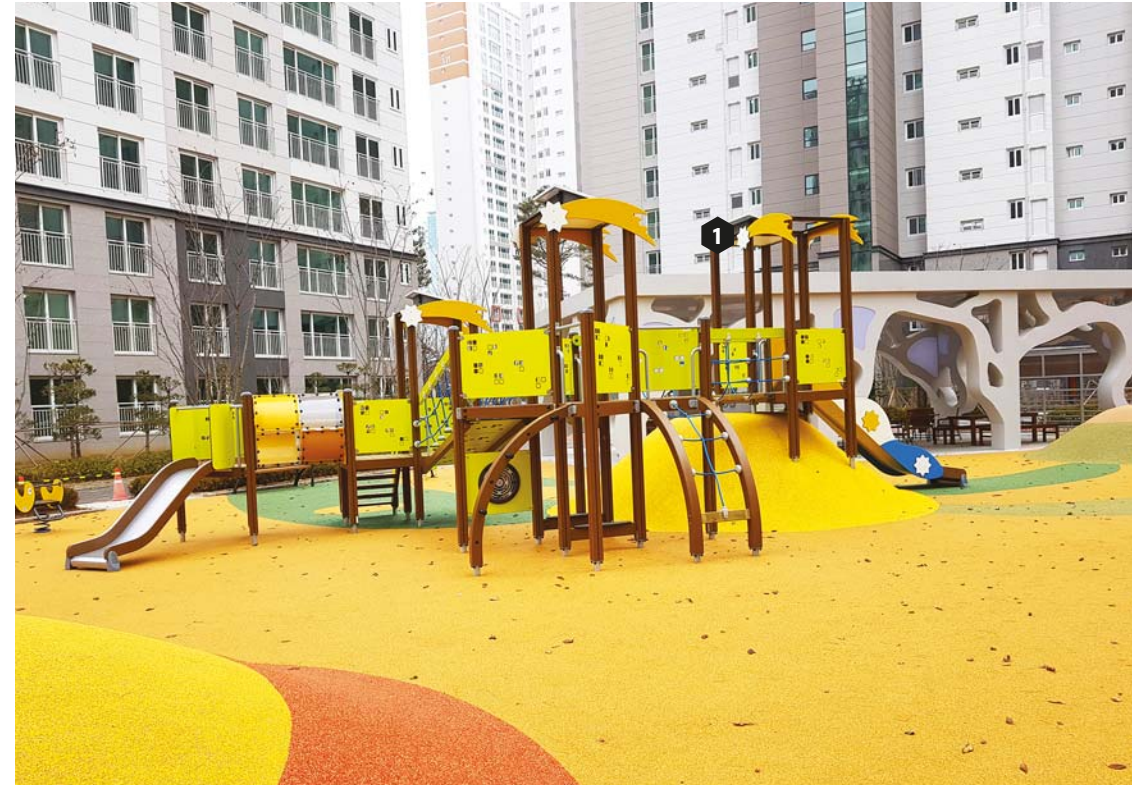
1 137840 Santa Maria

Laune Family Park
Lahti, Finland



1 Q12554 Castle

1 Q11990 Play centre



City of Seo-Gu
Seoul, Korea



1 CUSTOM DESIGNED Lighthouse

Meco Dehesa
Madrid, Spain

lappset mydesign

Lappset MyDesign! at your service

Our team of consultants can show you how to best combine our playground and exercise equipment to meet your unique needs and make a lasting impression. Our MyDesign! service covers everything from swapping a few components in a standard product to all-encompassing spatial planning and from simple logo labels to entire theme parks.

We have customised countless playgrounds, and we want to share our expertise with you. We promise to give you our best ideas and help you to come up with the right solution for your business or organisation.

You can find out more about Lappset MyDesign! at www.lappset.com.

Laune Family Park
Lahti, Finland



1 Q12762 Dragon's tail 2 Q12761 Dragon's body

3 Q12554 Castle 4 SOFTEX® wetpour safety surfacing

You can find out more about
Lappset MyDesign! at
www.lappset.com.



Ikšķile Libiesu
Ikšķile, Latvia

- 1 Q12175 Castle 2 137935 Helicopter 3 010512 Moose



1 LAPPSET PREMIUM Submarine adventure

Public park
Alcobendas, Spain



Manski pedestrian street
Kouvola, Finland

1 Q11339 Hot air balloon

Turning play into business - through happy children



1 CUSTOM DESIGNED LEGO ship

LEGOLAND® Deutschland Resort is part of the Merlin Entertainments Group. LEGO, the LEGO logo, the Brick and Knob configurations, the Minifigure, DUPLO, FRIENDS, MINDSTORMS, NEXO KNIGHTS, NINJAGO and LEGOLAND are trademarks of The LEGO Group. ©2019 The LEGO Group.

Turning play into business

Inspiring play areas keep the whole family happy in shopping centres, hotels and restaurants. When children are having fun, parents can relax and enjoy themselves. Families will always take their custom to whomever provides the best and most memorable facilities for children.

We can help you to build an indoor or outdoor play area that boosts your business. Take a look at clever ways to appeal to families on the following pages.

Photo: Kauppakeskus Itis



Itis shopping centre
Helsinki, Finland

- 1 220002M Tellurium
- 2 YA3500 Sona
- 3 220034 Froggy

Motor Museum
Riga, Latvia



- 1 200020 Spinning machine
- 2 010515 Tractor



Tallink Silja
Helsinki, Finland

1 Ship of Harry the Seal

Photo: Tallink Silja



Camping Les Grands Pins
Lacanau, France

1 Q13251 Flora play tower



1 Q12012 Car wash

Daddy's Diner, shopping centre IsoKirstiina
Lappeenranta, Finland

lappset creative

Activity centres and theme parks



Mattel Play!
Liverpool, UK

We design and build the most fascinating and fun theme parks and activity centres based on your brand or chosen theme. Alternatively, you can choose a theme from our portfolio or secure a licence for a global brand from our partner. We have decades of experience of coming up with solutions that truly work and that provide unforgettable experiences for all visitors.

We are by your side every step of the design process. Our experts help you to plan your concept from start to finish – from drawing up a provisional business and investment plan to the grand opening of your park. We also provide periodic inspections and a maintenance service for theme parks. We design a solution that best suits your needs and features the most exciting activities, and build your park in any indoor or outdoor location on a turnkey basis. Ensuring the success of our clients' business and always delighting the end users are among our most important goals.

1 CUSTOM Bob the Builder's hub

Find out more about Lappset Creative at
www.lappsetcreative.com



Mattel Play!
Liverpool, UK

1 CUSTOM Scoop



1 CUSTOM Bird Nest fortress

Angry Birds Activity Park
Johor Bahru, Malaysia



PETER RABBIT® Adventure Playground, Willow Activity Farm
Hertfordshire, UK

1 CUSTOM Peter Rabbit's fortune wheel



F O L L O W U S



#lappset @LappsetGroup