

Quality & Affordable Classroom Solutions

Ready in
Just 3
Weeks

Premier Play Solutions (PPS) supply and install outdoor play, educational recreational and sporting school playground equipment, classrooms and apparatus, surfaces and markings to schools and local authorities across the UK

PPS are approved suppliers on the CPC and YPO Frameworks and are committed to providing quality and best value to UK Schools, Colleges and Universities



www.premierplaysolutions.co.uk



Crescent Purchasing Consortium

2 Bay Classroom

20' x 16' / 6m x 4.8m

- Four windows 800mmx1100mm tilt & swing double glazed units with aluminium roller shutter externally.
- One personnel door 1980mmx754mm opening flush aluminium with three keys.
- Ready in just 3 weeks.

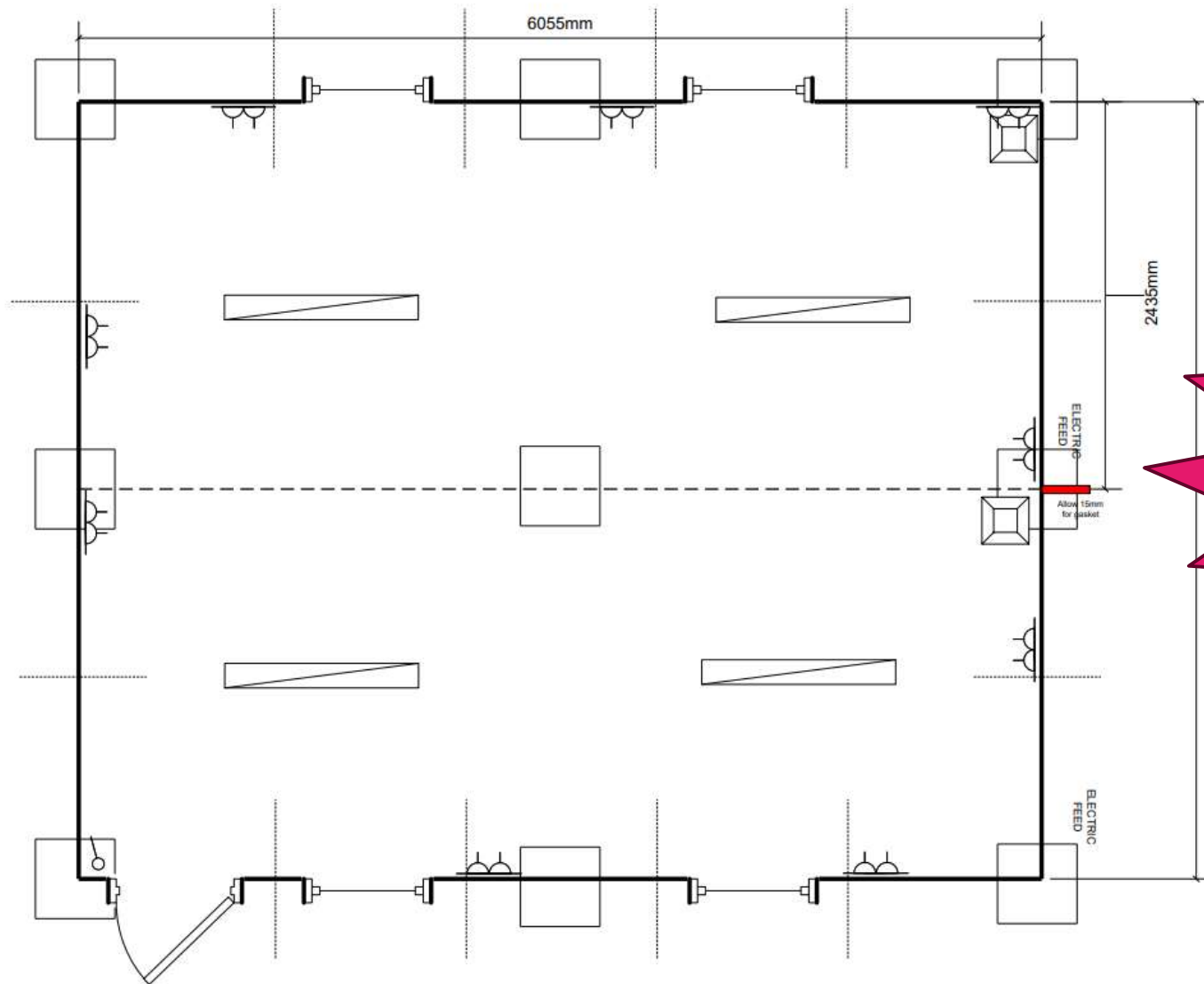


**Ready in
Just 3
weeks**

**Cladding options are
available**



Building Cost	= £31,714.75 + VAT
Electrical Dead Test prior to delivery	= £340.00 + VAT
Fitting Cost	= £2070.00 + VAT



Fully Insulated

3 Bay Classroom

20' x 24' / 6m x 7.3m

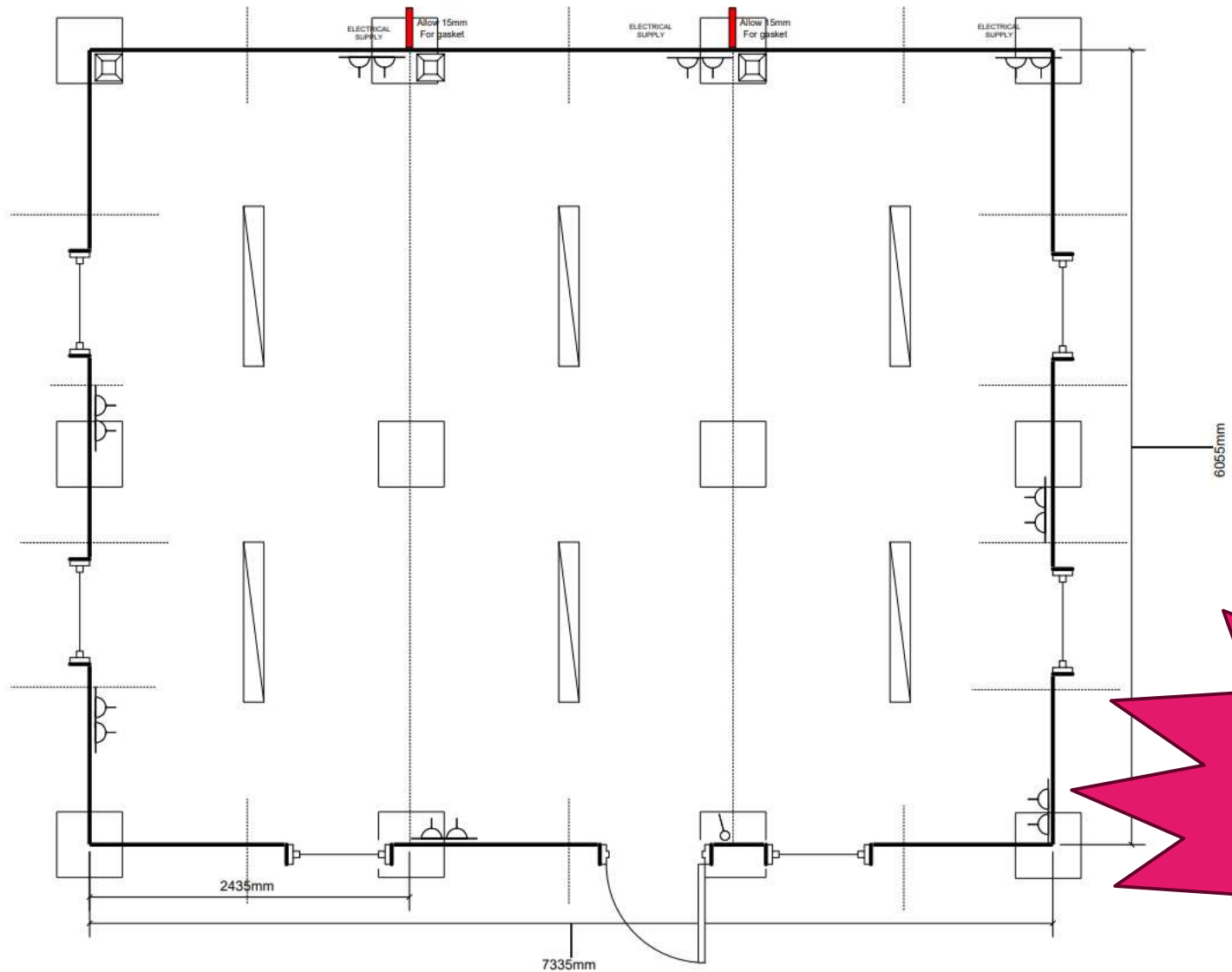
- Unit Six windows 800mm x 1100mm tilt & swing double glazed units with aluminium roller shutter externally.
- One personnel door 1980mm x 754mm opening flush aluminium with three key
- Ready in just 3 weeks.



**Affordable
and
Accessible**

**Cladding options are
available**





**Electric
Supplied**

4 Bay Classroom

20' x 24' / 6m x 7.3m

- Eight windows 800mm x 1100mm tilt & swing double glazed units with aluminium roller shutter externally.
- Two personnel door 1980mm x 754mm opening flush aluminium with three keys.
- Ready in just 3 weeks.

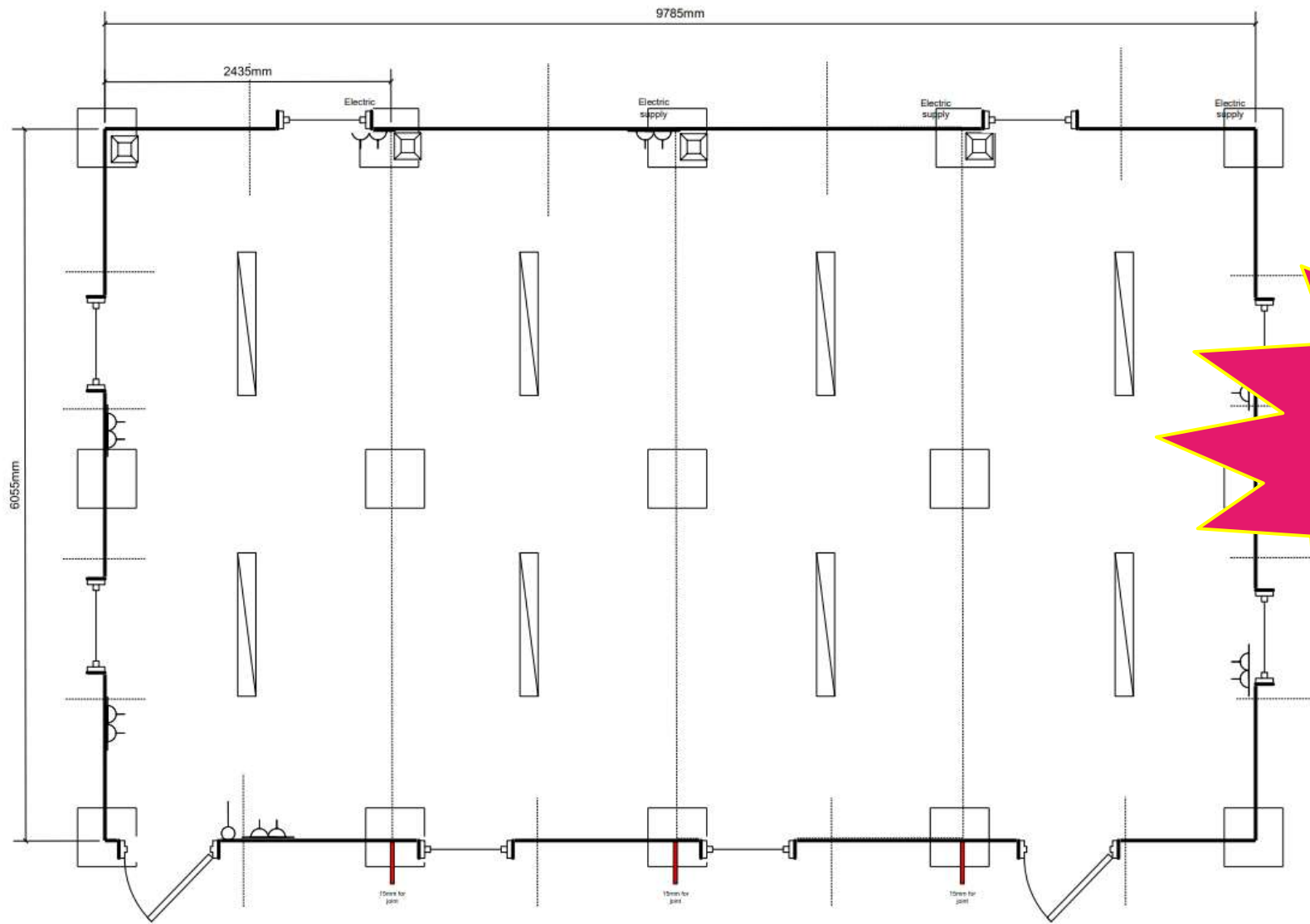


Safe and Secure

Cladding options are available



Building Cost = £61,155.00 + VAT
Electrical Dead Test prior to delivery = included in price of building.
Fitting Cost = £4,140.00 + VAT



Multi Purpose Spaces

5 Bay Classroom

20' x 24' / 6m x 7.3m with toilet

- Doors right hand hung outward opening flush aluminium with three keys.
- Windows 800x1100 UPVC double glazed tilt & swing windows with aluminium external roller shutters, UPVC (no shutter), and 400x500 UPVC framed single glazed obscure (no shutter).
- Toilet - Mains flushing toilet, hand basin with cold tap, electric hand wash, mirror, soap dish, towel holder, tube heater, light fitting & high-level window.
- Ready in just 3 weeks.



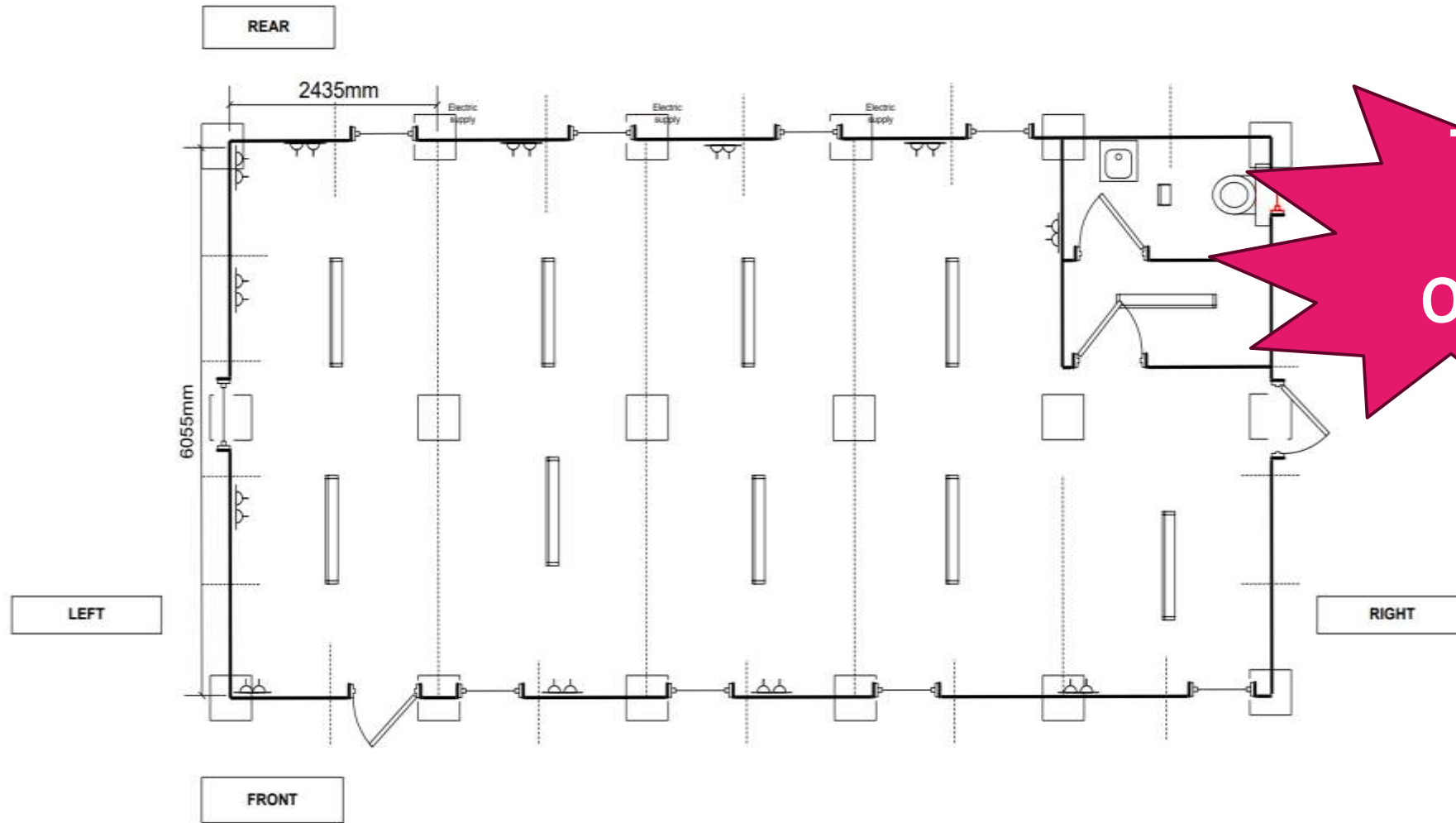
**Double
Glazed
Units**



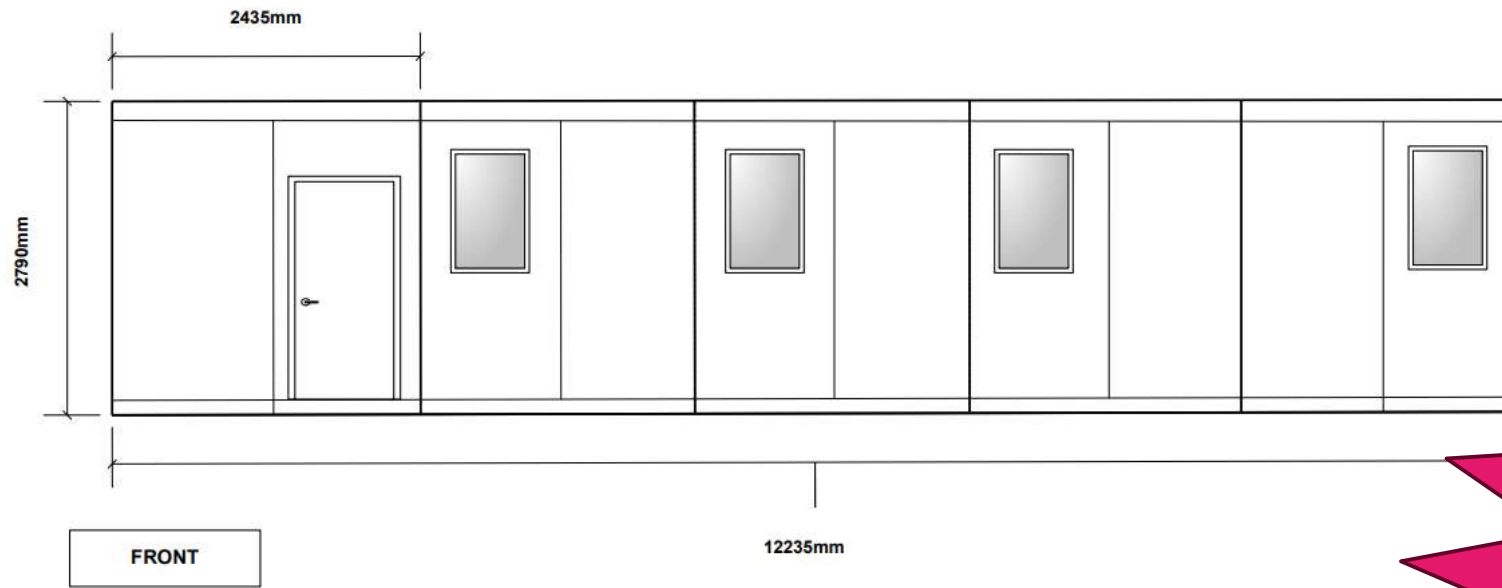
**Cladding options are
available**



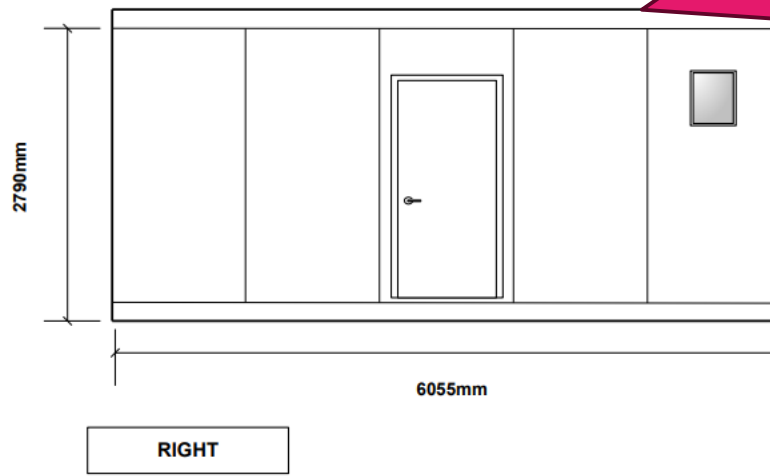
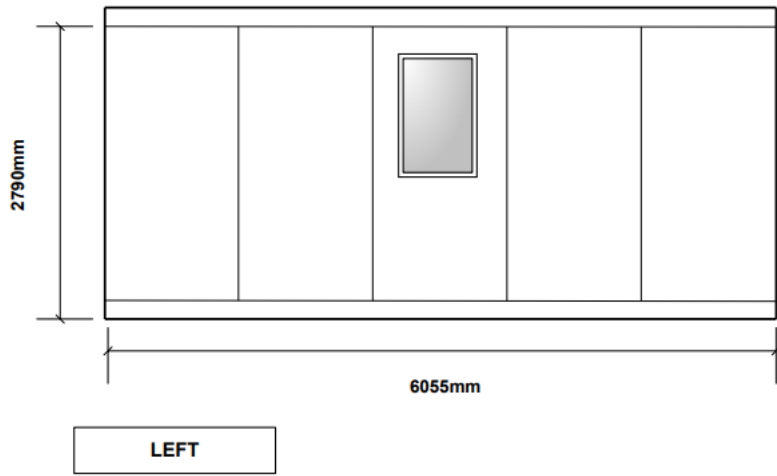
Building Cost = £83,655.00 + VAT
Electrical Dead Test prior to delivery = included in price of building.
Fitting Cost = £5175 + VAT

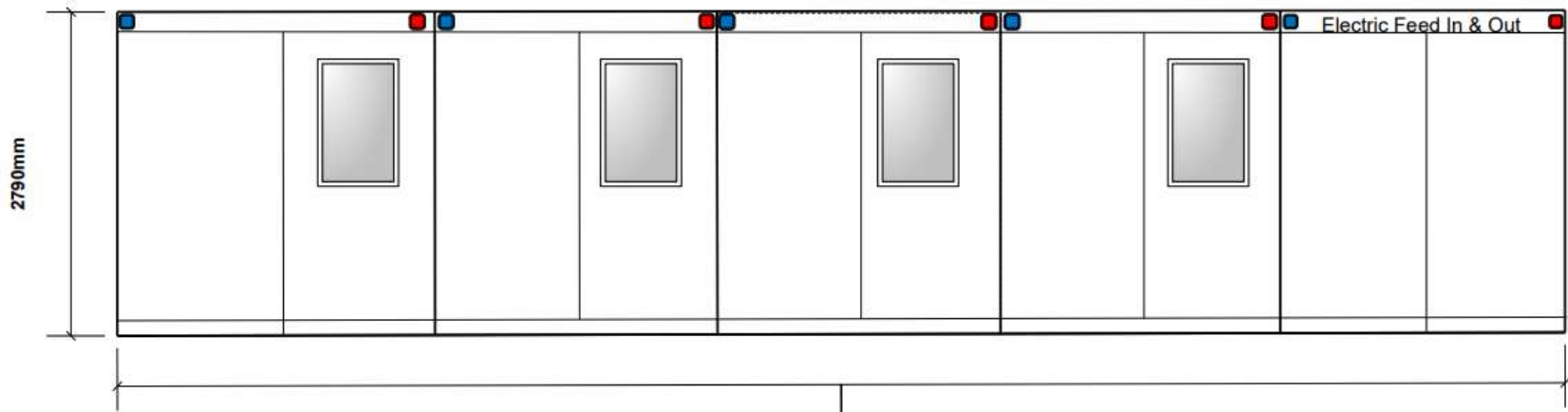


**Toilet
Block
Options**



Canteen and Communal Spaces





Electricity connected

6 Bay 2 x Classroom with Lobby & Toilets

40' x 24' (12m x 7.3m)

- Kitchen - with 1000mm base unit, stainless steel sink, cold tap, electric water heater, worktop. Windows - 800x1100 tilt & turn, double glazed with UPVC frame and aluminium roller shutter externally, 400 x 500 high level, Obscure Glass, double glazed with UPVC frame.
- Doors - 1985 x 743 right hand hung, outward opening, flush aluminium with three keys.
- Toilet - mains flushing toilet, hand basin with cold tap & electric water heater, mirror, soap dish, towel ring, toilet roll holder, door inward opening flush aluminium with three keys.
- Ready in just 3 weeks.



Instant
Kitchen and
Dining
Spaces

Cladding options are
available



Building Cost = £109,271.25 + VAT
Electrical Dead Test prior to delivery = included in
price of building.
Fitting Cost = £6,210.00 + VAT

7 Bay 2 x Preschool Classrooms with lobby & toilets

- Windows - 800x1100 UPVC double glazed tilt & turn/sliding with aluminium roller shutters externally. 400 x 500 High level obscure window.
- Doors - 754 right hand hung, outward opening, flush aluminium with three keys.
- Toilet - mains flushing toilet, hand basin with cold tap & electric water heater, mirror, soap dish, towel ring, toilet roll holder, door inward opening flush aluminium with three keys.
- Ready in just 3 weeks.

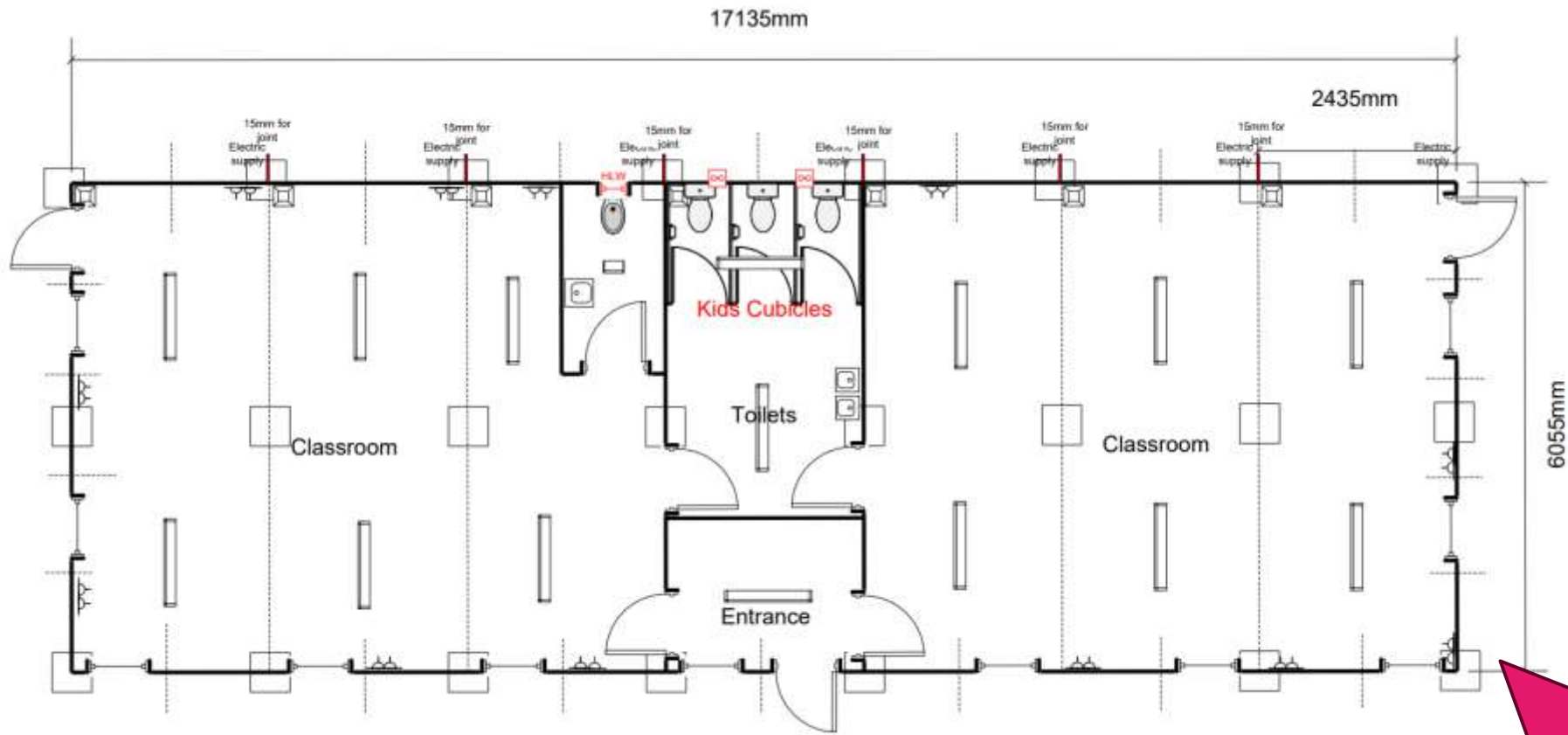


**Instant
School
Extensions**

**Cladding options are
available**



Building Cost = £128,446.00 + VAT
Electrical Dead Test prior to delivery = included in price of building.
Fitting Cost = £7245.00 + VAT



500x500 foundation pad



Double Socket



Extractor Fan



Consumer Unit



Light Switch



Year
Group
Solutions

What's next?

- Contact us now
info@premierplaysolutions.co.uk
01949 861 486
- Talk through your needs
- Arrange a FREE no obligation site visit
- One of our team will visit the school, discuss your needs and provide a FREE quote
- Install your new classroom within just 3 weeks